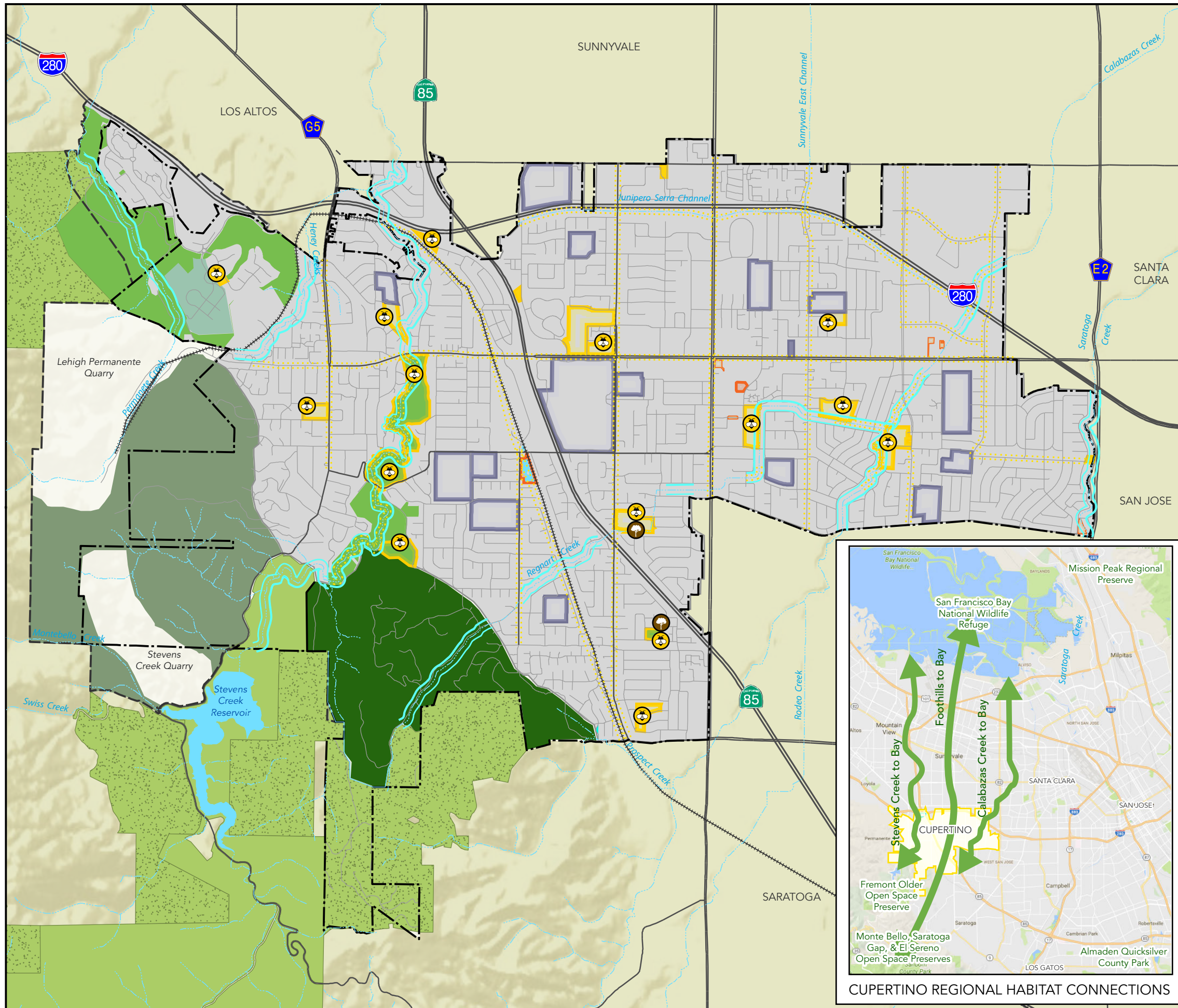




Parks & Recreation System Master Plan

CUPERTINO

Opportunity C: Foster Natural Systems (Draft)



- Habitats**
- Rural Residential/Oak Woodland
 - Rural Residential/Oak Woodland
 - Intermittent Urban Tree Canopy

- Park and Open Spaces**
- Natural Resource Areas
 - Open Space Preserves
 - City Parks
 - Non-City Parks
 - Schools and Colleges
 - Cemetery

- Base Map Features**
- Cupertino City Boundary
 - Cupertino Sphere of Influence *
 - Railroad
 - Creeks and Channels
 - Water Bodies

- Opportunities for Natural Corridor Enhancement**
- Creeks/Riparian Enhancements
 - Pollinator Pathways
 - Park Forest
 - Pollinator Gardens

